

VENTUS HD6-FIXED

POWER CROSSED WITH PRECISION FOR UNCOMPROMISING PERFORMANCE



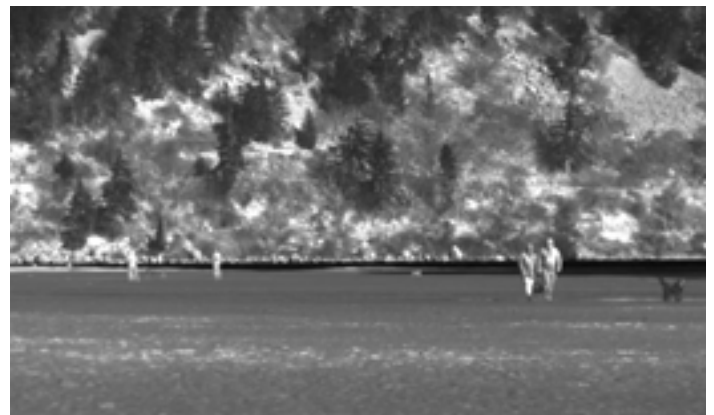
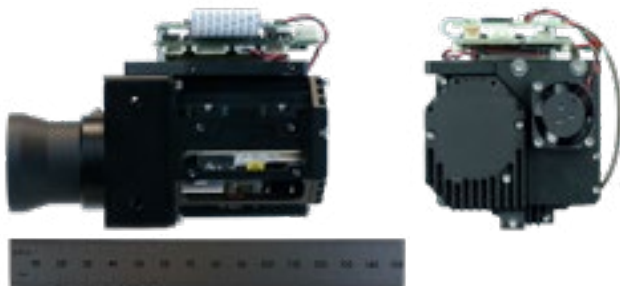
The Ventus HD6-Fixed is compact and Low-SWaP for airborne mission aboard crewed and uncrewed systems. Unmatched 6micron pixel pitch HD image with extended life MWIR cooler.

DETAILS

Introducing the Ventus HD6-Fixed product family: potent yet compact fixed focal length HD MWIR cameras meticulously crafted for seamless integration. Small form factor allows for effortless inclusion into a wide variety of applications delivering unparalleled capabilities within convenient packages. The standard configuration includes a video encoder/processor for centralized interfaces and advanced image processing. A core configuration provides a SWaP optimized option.

APPLICATIONS

- + Low-SWaP
- + Critical Infrastructure
- + Airborne
- + Dismounted Sensors
- + Terrestrial Surveillance
- + Crewed/Uncrewed Systems



VENTUS HD6-FIXED

POWER CROSSED WITH PRECISION FOR UNCOMPROMISING PERFORMANCE

EXPORT CLASSIFICATION: DUAL USE

FEATURE SPECS

DETECTOR



Detector Type	Mercury Cadmium Telluride
Array Format	1280 x 960
Pixel Pitch	6µm
Spectral Response	MWIR (3.4 to 4.8µm)
Frame Rate	30 -120Hz, 60Hz default
Bit Depth	14-bit
NETD	30mK Typical

SYSTEM



	HD6-Fixed (Core)	HD6-Fixed
Digital Video Output	HDMI, HDSOI (accessory) CameraLink®	HDMI, HDSOI (accessory) CameraLink®
IP Video Output	N/a	Ethernet (H.264, H.265)
NUC	2-point NUC Bad Pixel Replacement	2-point NUC Bad Pixel Replacement
Image Enhancement	N/a	Linear Histogram AGC, CLAHE, LAP, Sharpen, De-noise, Electronic image stabilization
Color Palette Options	N/a	User color palette/LUT
Digital Zoom/Pan	1X to 16X	1X to 16X
Onboard Storage	N/a	32GB standard, expandable to 512GB

ENVIRONMENTAL



	No Lens	No Lens (Core)	30mm Lens	30mm Lens (Core)
Input Voltage	12VDC	14VDC	12VDC	14VDC
Power Dissipation	11W Typical 14.4W during cool down	7.5W Cool down 10.08W Inrush <5.6W Typical	11W Typical 14.4W during cool down	7.5W Cool down 10.08W Inrush <5.6W Typical
Operating Temperature	-20°C - +40°C	-40°C - +71°C	-20°C - +40°C	-40°C - +71°C
Mounting	1/4-20 Tripod mount and M3 tapped mounting holes	1/4-20 Tripod mount and M3 tapped mounting holes	1/4-20 Tripod mount and M3 tapped mounting holes	1/4-20 Tripod mount and M3 tapped mounting holes

LENS OPTIONS



	No Lens	No Lens (Core)	30mm Lens	30mm Lens (Core)
EFL	N/a	N/a	30mm	30mm
F#	N/a	N/a	2.6	2.6
H/VFOV	N/a	N/a	14.3° HFOV x 10.75° VFOV	14.3° HFOV x 10.75° VFOV
Focus	N/a	N/a	Threaded Focus	Threaded Focus
Optical Zoom	N/a	N/a	N/a	N/a
Environmental (coating)	N/a	N/a	AR Coating	AR Coating
Size	105 x 84 x 81mm	95 x 89 x 58mm	131 x 84 x 81mm	122 x 89 x 58mm
Weight	611g	488g	701g	580g